

# Techno<sub>sub</sub>

INDUSTRIAL PUMPS  
DEWATERING SOLUTIONS



TECHNOJET **MH**  
**SERIES**

HIGH-PRESSURE MULTISTAGE CENTRIFUGAL PUMPS



# TECHNOJET MH SERIES

## HIGH-PRESSURE MULTISTAGE CENTRIFUGAL PUMPS

Technojet multistage pumps are the best pumping solution on the market, able to overcome the difficult conditions encountered in mines. High-pressure applications, immediate delivery and customized designs make this pump the ultimate standard for the mining industry.

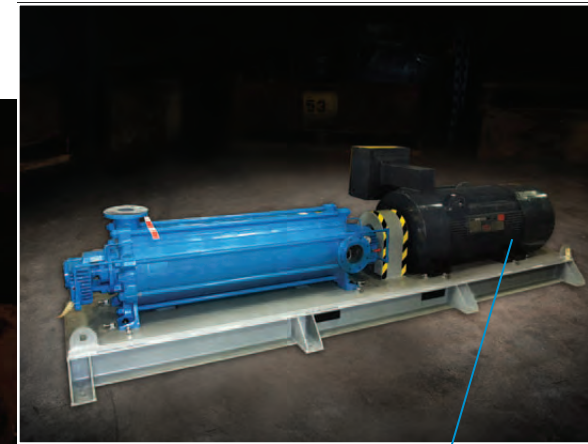
### OTHER APPLICATIONS

- Water distribution systems
- Irrigation
- Pressure booster for water networks
- Boiler water recirculation

### CHARACTERISTICS

- Head pressure up to 2300 feet (1000 PSI)
- Flow capacity up to 3000 gpm
- Designed to handle abrasive and corrosive liquids with up to 5% solids
- Rotating speeds: 1800 RPM & 3600 RPM

# #1 CHOICE FOR HIGH-PRESSURE DEWATERING!



Technojet MH pump driven by **ELECTRIC MOTOR** or **DIESEL ENGINE** standardized with a flexible coupling.





# SECTIONAL VIEW DESIGN



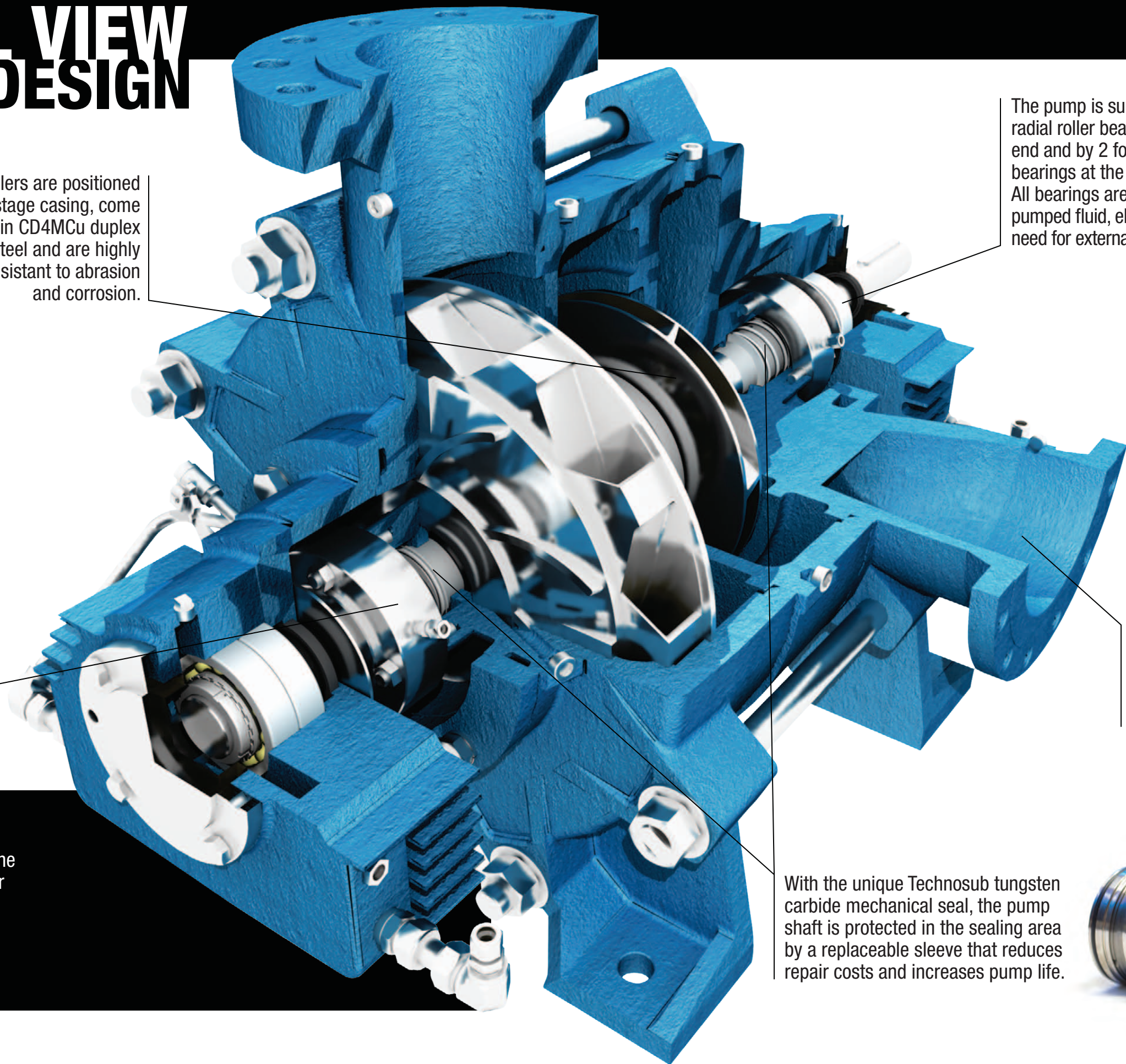
Closed impellers are positioned inside each stage casing, come standard in CD4MCu duplex stainless steel and are highly resistant to abrasion and corrosion.

The Technojet design does not use a balancing valve like other multistage pumps, but rather a thrust bearing to handle axial loads. This increases pump longevity in the difficult conditions associated with the mining industry.

## CONSTRUCTION MATERIALS

Technojet pumps can be manufactured in the following materials, depending on customer requirements.

- Cast iron
- Duplex stainless steel (CD4MCu)



The pump is supported with a radial roller bearing at the drive end and by 2 four-contact-point bearings at the non-drive end. All bearings are cooled by the pumped fluid, eliminating the need for external fresh water.

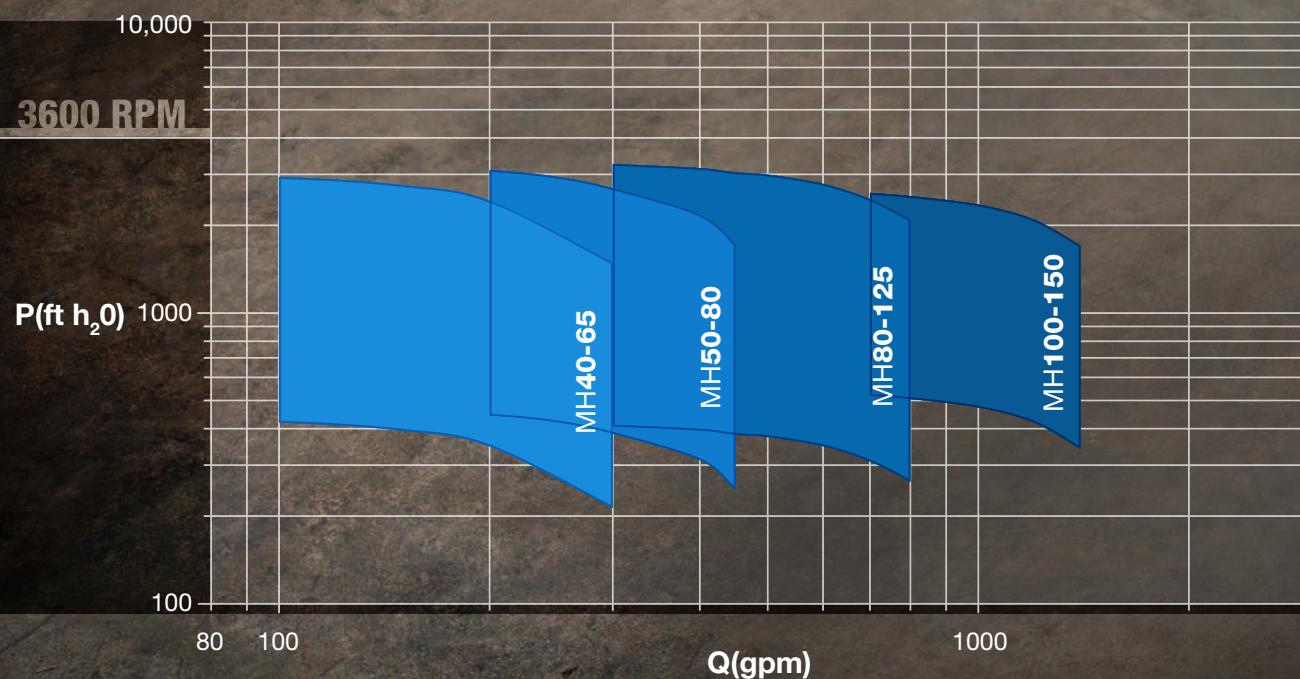
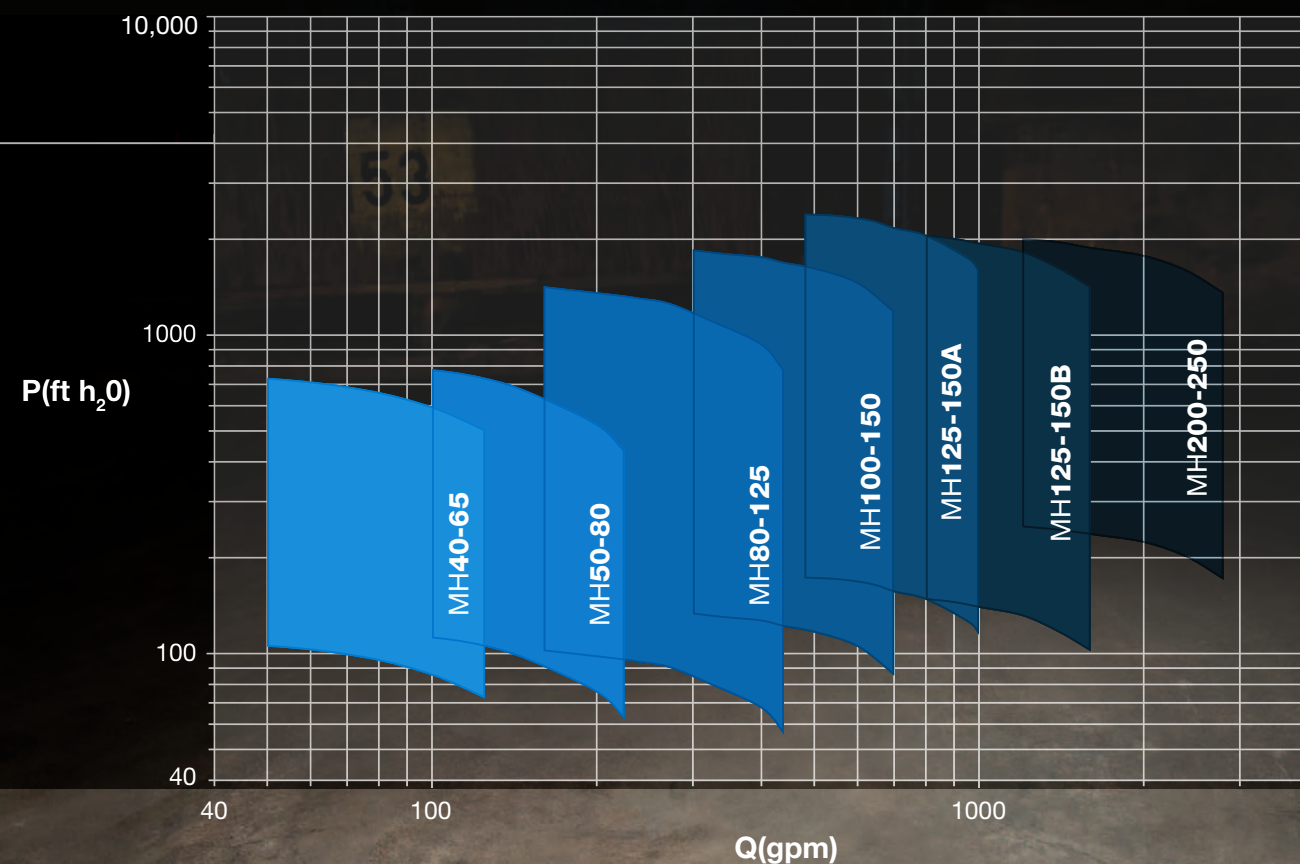
The suction is custom designed and can be configured on either the left or right hand side to match site conditions.

With the unique Technosub tungsten carbide mechanical seal, the pump shaft is protected in the sealing area by a replaceable sleeve that reduces repair costs and increases pump life.





# PERFORMANCE DATA CURVES



## QUALITY ASSURANCE

From initial order to final delivery, Technosub is committed to quality in every step of its operation.

Technosub's facility is equipped with a test bench that includes a 36,000 gallon pit and a 1 megawatt generator, which allows for testing of pumps up to 800 HP and 4160 V.

**WITHOUT EXCEPTION, all pumps that leave our facility are tested to ensure their performance meets customer requirements.**

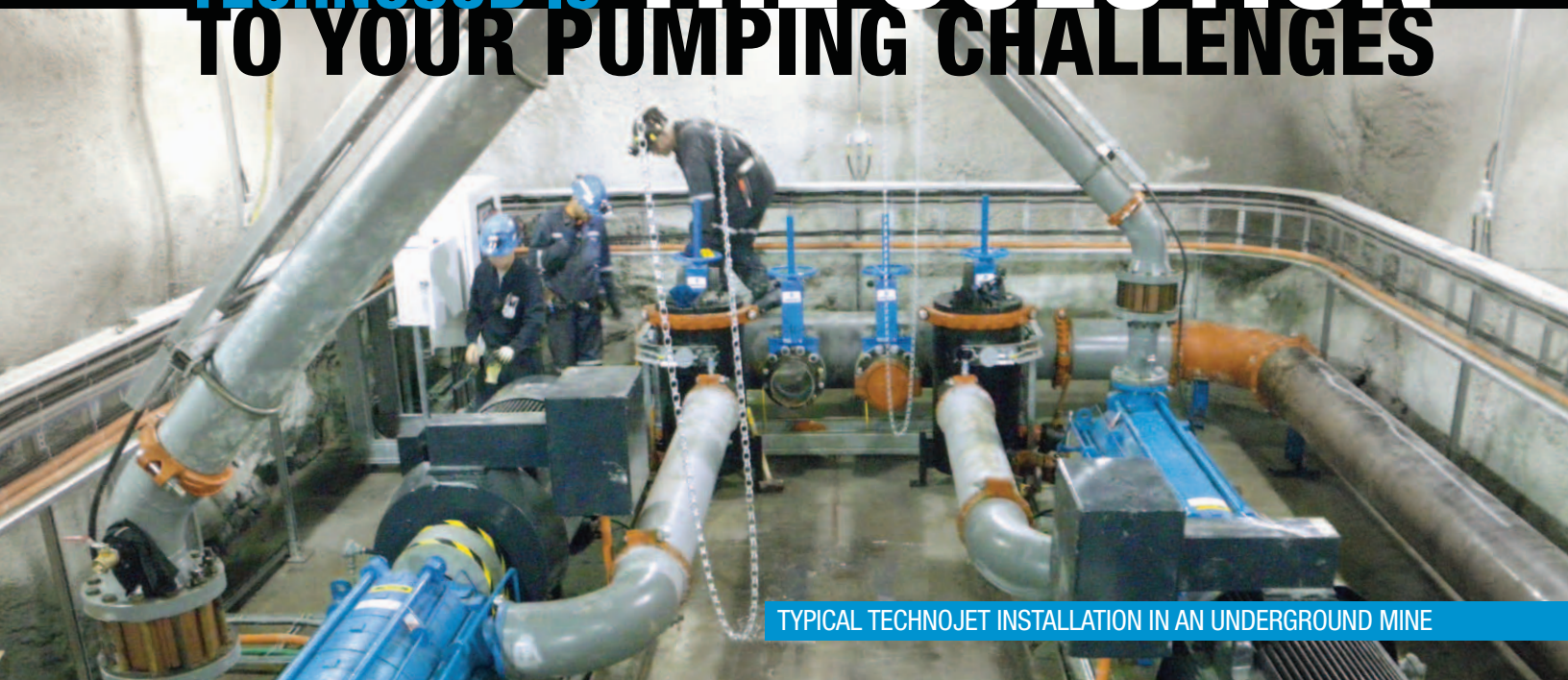
All pumps are delivered with test results, including actual performance curves.

All rotating parts manufactured by Technosub are balanced with extreme precision to reduce overall vibrations, allowing for smooth operation.





# TECHNOSUB IS THE SOLUTION TO YOUR PUMPING CHALLENGES



Technosub service goes beyond providing pumping solutions. Our engineers and technical representatives are always available to solve pumping challenges, at every stage of the process, anywhere, any time.

## IN ADDITION TO THE TECHNOJET PUMPS, OUR TEAM CAN SUPPLY

- General arrangement drawings
- On-site assistance, solution engineering & commissioning
- Detailed drawings
- Sump designs
- Piping calculations
- Valve selection
- Control panel selection/programming
- Operating sequences
- Protection against water hammer & cavitation
- Installation methods and foundation designs

## ARE YOU SUCCESS READY ?

**ENTER THE CYCLE  
OF SUCCESS**

**MSEINC.NET**

N. Highway Drive, Tucson, AZ USA 85705

**T** 520 888 4101 **TF** 800 666 8320 [info@mseinc.net](mailto:info@mseinc.net)

Miller Sales & Engineering is a division of Technosub



**MILLER**  
SALES & ENGINEERING INC.